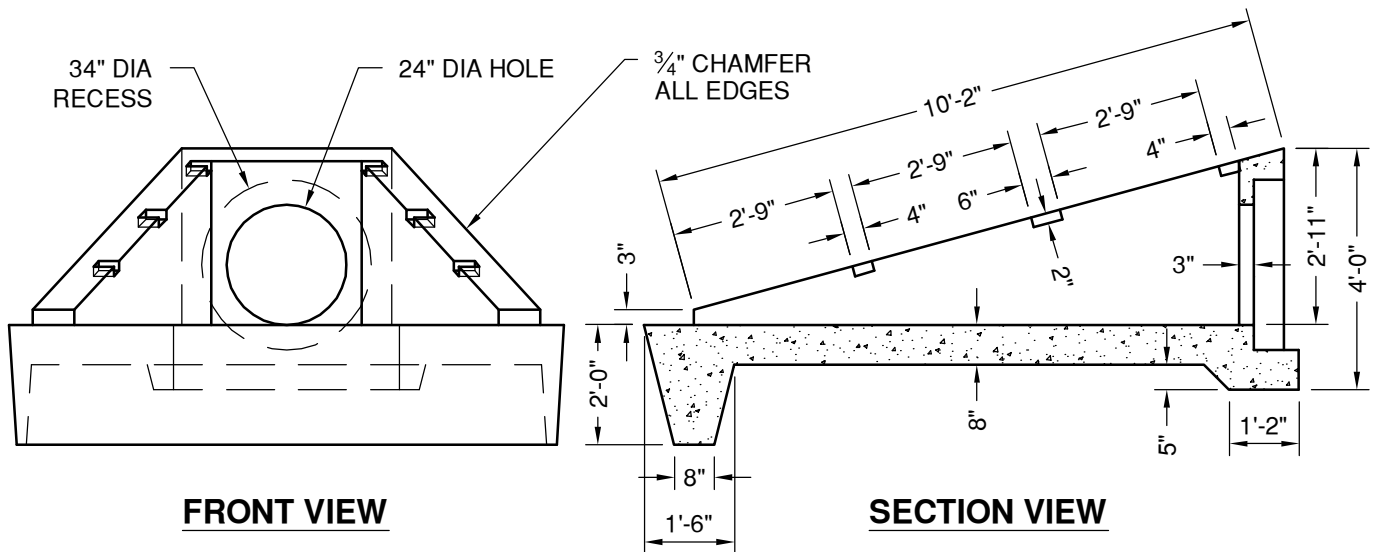


PLAN VIEW

Grate Size	Qty	Weight
3'-0" x 3'-1 1/2" => 4'-6 5/8"	1	187#
3'-0" x 4'-8 1/2" => 6'-1 5/8"	1	267#



FRONT VIEW

SECTION VIEW



"NPCA" CERTIFIED PLANT
 16700 SIMA GRAY RD, HENRYVILLE, IN 47126
 Phone: (812) 246-6258 Fax: (812) 294-4862

SPECIFICATIONS

CONCRETE: 4500 PSI @ 28 DAYS
 REINFORCEMENT: ASTM A-615, GR 60
 DESIGN SPECIFICATION: KYTC RDB-105-05
 GRATE DESIGN SPECIFICATION: KYTC RDB-106-04

WEIGHT: 10,935#

**SLOPED & FLARED BOX
 INLET / OUTLET
 24" PIPE**

DATE: 03-27-18

DWG #HW-SFIO-24