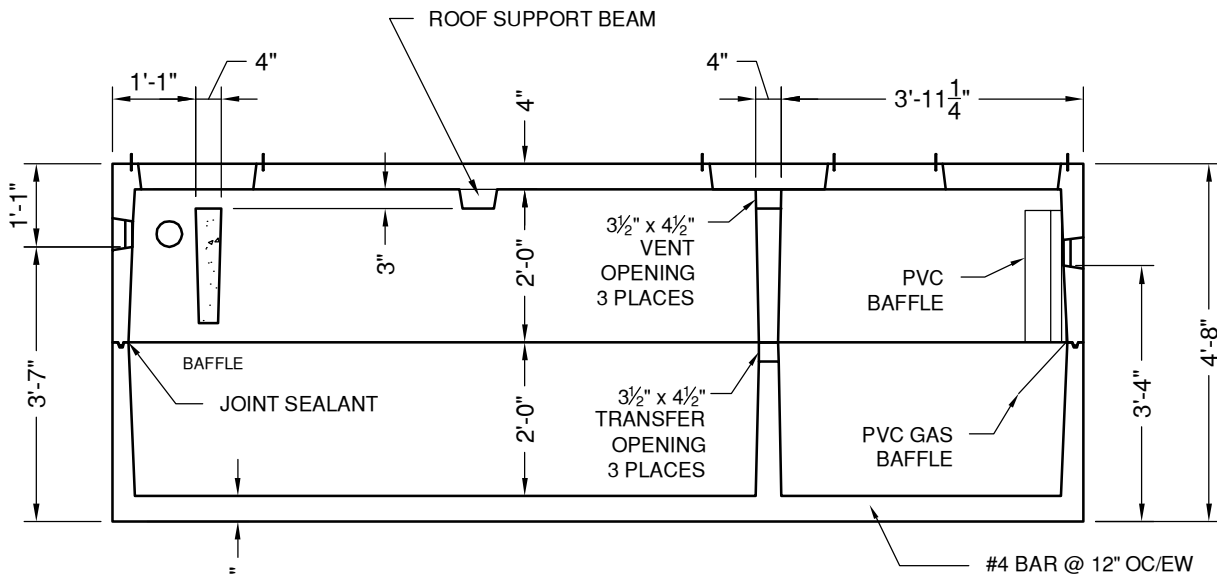


**PLAN VIEW**

18 1/2" DIA CONCRETE PLUG  
& 20" DIA HDPE RISER  
STARTER RING - 3 PLACES



**SECTION VIEW**

KY-C15-0160-T	
TOP SECTION: 8,560#	
BOTTOM SECTION: 7,970#	
TOTAL WEIGHT: 16,530#	
<b>SEPTIC TANK</b>	
<b>1500 GALLON - 2 COMP</b>	
<b>KENTUCKY</b>	
DATE: 4-11-17	DWG #ST-KY-1500-2



"NPCA" CERTIFIED PLANT

16700 SIMA GRAY RD, HENRYVILLE, IN 47126  
Phone: (812) 246-6258 Fax: (812) 294-4862

**SPECIFICATIONS**

CONCRETE: 4500 PSI @ 28 DAYS  
REINFORCEMENT: ASTM A-615, GR 60  
LOAD DESIGN: NON-TRAFFIC 18" MAX COVER