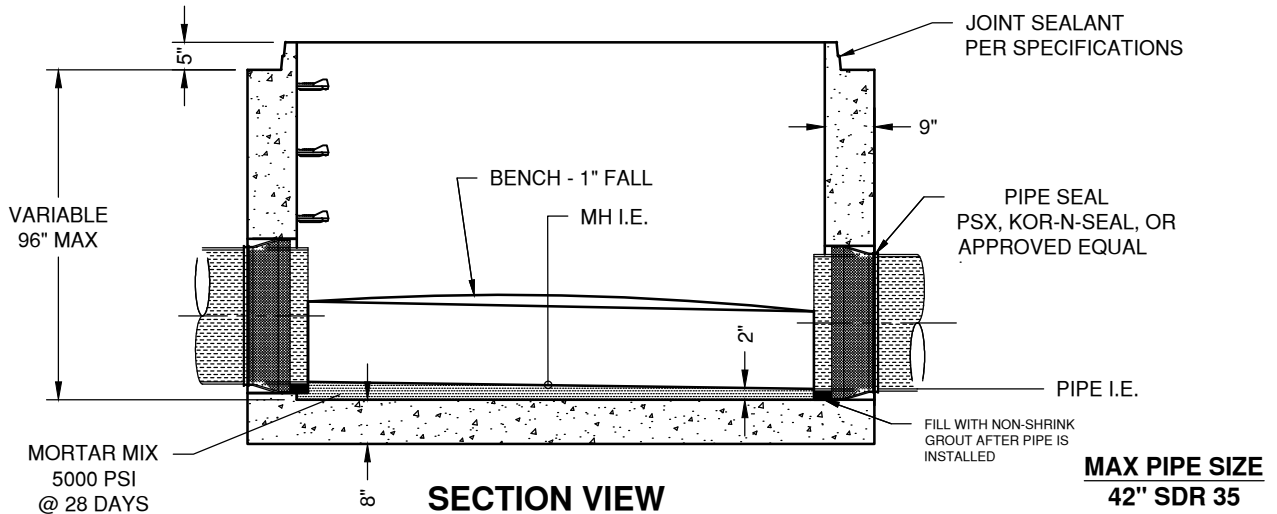
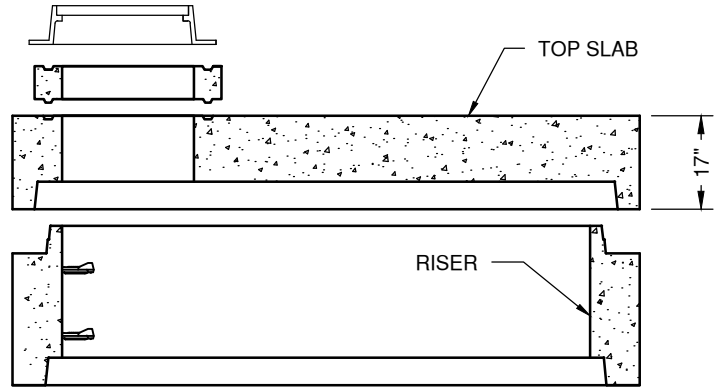
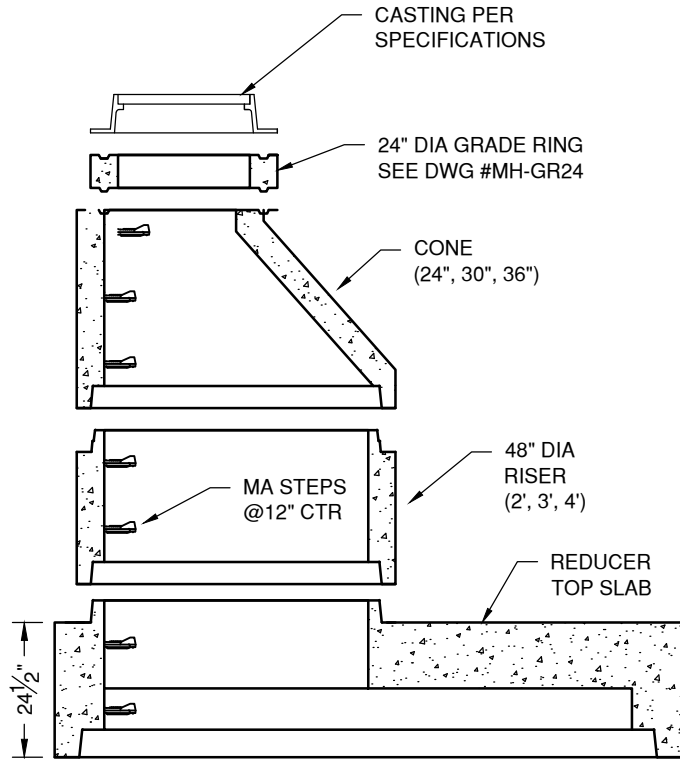


96" DIA COMPONENTS		
SIZE (ID)	HEIGHT (ID)	WEIGHT
BASE w/INVERT	60"	37,150#
RISER	24"	6,185#
RISER	36"	9,280#
RISER	48"	12,370#
RISER	60"	15,465#
RISER	72"	18,555#
RISER	96"	24,740#
RISER	CUSTOM	3,090#/VF
REDUCER SLAB	24 1/2"	11,490#
TOP SLAB	17"	10,840#



**MAX PIPE SIZE**  
42" SDR 35



"NPCA" CERTIFIED PLANT  
16700 SIMA GRAY RD, HENRYVILLE, IN 47126  
Phone: (812) 246-6258 Fax: (812) 294-4862

**SPECIFICATIONS**

CONCRETE: 4500 PSI @ 28 DAYS  
REINFORCEMENT: ASTM A-615, GR 60  
DESIGN LOAD: AASHTO HS-20  
DESIGN SPECIFICATION: ASTM C-478

WEIGHT: See Chart

**SANITARY MANHOLE**  
**96" DIAMETER**

DATE: 12-23-16

DWG #SAN-MH-96