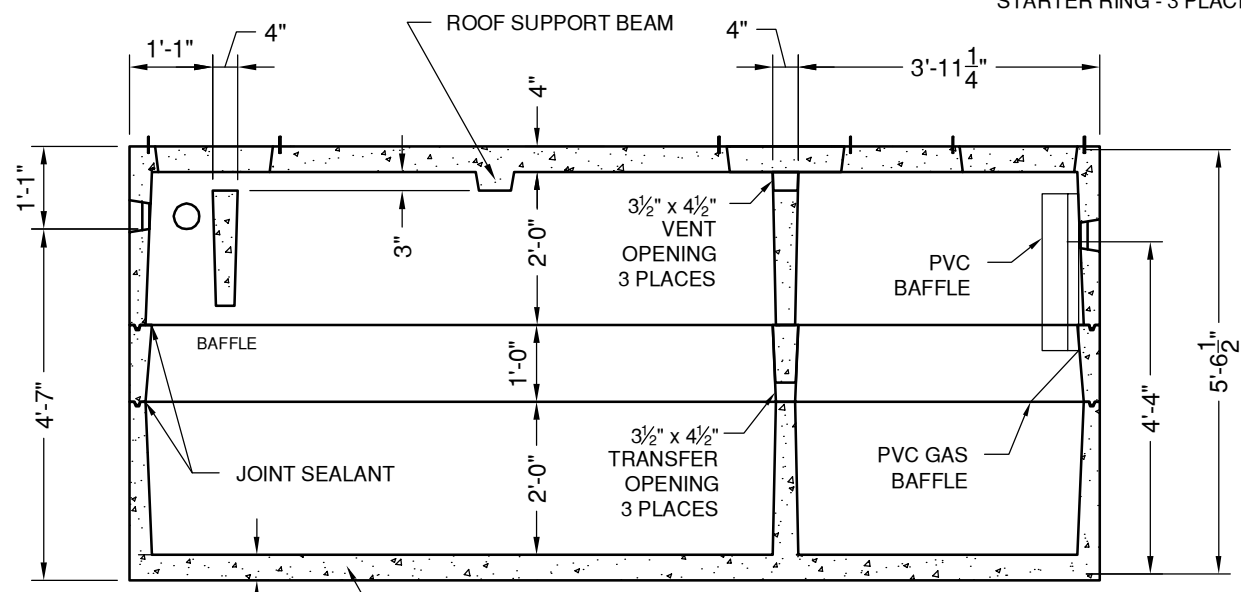


PLAN VIEW

18 1/2" DIA CONCRETE PLUG
& 20" DIA HDPE RISER
STARTER RING - 3 PLACES



SECTION VIEW

#4 BAR @ 12" OC/EW

KY-C20-0160-T	
TOP SECTION: 8,560#	
RISER SECTION: 2,010#	
BOTTOM SECTION: 7,970#	
TOTAL WEIGHT: 18,540#	
SEPTIC TANK	
2000 GALLON - 2 COMP	
KENTUCKY	
DATE: 4-11-17	DWG #ST-KY-2000-2



"NPCA" CERTIFIED PLANT
16700 SIMA GRAY RD, HENRYVILLE, IN 47126
Phone: (812) 246-6258 Fax: (812) 294-4862

SPECIFICATIONS

CONCRETE: 4500 PSI @ 28 DAYS
REINFORCEMENT: ASTM A-615, GR 60
LOAD DESIGN: NON-TRAFFIC 18" MAX COVER